



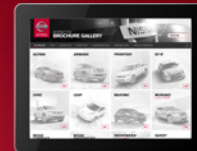
Innovation that excites

2016 LEAF®

Zero Emission™

SWIPE FOR MORE INFO

Download the Interactive Brochure Hub app on your tablet and you'll have LEAF® and the whole Nissan lineup at your fingertips. Get the full product story enhanced with interactive demos and videos, plus complete info on trim levels, colors, accessories, and more.



Nissan Interactive Brochure Hub available free on the App Store® and Google Play.®

Or go to NissanUSA.com to view on your desktop.



NISSAN ROADSIDE ASSISTANCE

Your peace of mind is on us. For 36 months or 36,000 miles, whichever comes first, your new Nissan is covered for the following:¹

- Flat-tire changes
- Towing service
- Trip Interruption benefits
- Vehicle lockouts
- Out of charge

Los folletos de Nissan también están disponibles en español. Visita: NissanUSA.com/folletos-espanol

And follow Nissan on:



visit NissanUSA.com/leaf

¹Roadside Assistance and Trip Interruption available during the first 36 months or 36,000 miles (whichever occurs first) after initial new vehicle delivery. Restrictions apply. See Owner's Manual for details. App Store® is a registered trademark of Apple, Inc. All rights reserved. Facebook® is a registered trademark of Facebook, Inc. Twitter® is a registered trademark of Twitter, Inc. Google®, Google Play®, and YouTube® are registered trademarks of Google Inc.

PRINTED IN USA.



Innovation that excites

ELECTRIFY your drive with all energy, no exhaust. Wake up fully charged, and get where you're going with swift power out of the gate. Change course: Take the scenic route, and stay out longer with confidence. Embrace the future in America's best-selling fully electric vehicle.¹ Now with even longer range available.² The 2016 Nissan LEAF.[®] A whole new outlook on **LIFE.**



¹Source of data: InsideEVs.com Cumulative Sales Data (December 2010–March 2016). ²2016 Nissan LEAF[®] S24 trim EPA range is 84 miles. 2016 Nissan LEAF[®] S30, SV and SL trim EPA range is 107 miles. Actual mileage may vary with driving conditions — use for comparison only.

Nissan LEAF[®] SL shown in Pearl White.

STEP UP TO MORE RANGE THAN EVER

LEAF® is all about progress. Now you can step up to a larger battery capacity with extra range.

UP TO
107 MILE RANGE¹
30 kWh BATTERY

S30, SV and SL models.

UP TO
84 MILE RANGE¹
24 kWh BATTERY

S24 model.

Your home dock will be your primary charging station, but you've got options:

Normal Charge – 240-volt charging dock:

LEAF SV and SL charge in as little as 6 hours. The S24 model, in about 8, or as little as 5 with the available Charge Package. And the new S30 model charges in about 11, or as little as 6 with the available Charge Package.²

Quick Charge – DC fast-charge station:

Available Quick Charge port lets you reach 80% charge in about 30 minutes.² Do your shopping, come back out, and you're good to go.

Opportunity Charge – 110/120-V cable:

Every LEAF comes with an opportunity-charge cable. The slowest way to go but works in a pinch.³

Public Charge Availability:

With approximately 22,000 public charging stations currently available, we're constantly working with government and private companies to expand private charging networks.⁴



Download the free LEAF EZ-ChargeSM app to find a station near you.⁴ Available in the iTunes[®] and Android[®] app stores.

Watch how to get your home charging dock installed at bit.ly/leafdock16

¹2016 Nissan LEAF[®] S24 trim EPA range is 84 miles. 2016 Nissan LEAF[®] S30, SV and SL trim EPA range is 107 miles. Actual mileage may vary with driving conditions — use for comparison only.
²Approximate time. Charge times may vary depending on temperature, age of battery, quick charger used, and other conditions. Quick Charge charging networks are third party owned, not within Nissan's control. Availability of charging stations not guaranteed. ³Use only a 110–120 volt, 15-amp dedicated outlet for charging. ⁴Public charging networks are third party owned, not within Nissan's control. Availability/accessibility of charging stations is not guaranteed. EZ-ChargeSM is a service mark of NRG EV Services LLC. Android[®] is a registered trademark of Google Inc. iTunes[®] is a registered trademark of Apple, Inc. All rights reserved.





100% TORQUE – INSTANT FUN

Say “hello” to your seatback – Nissan LEAF’s 100% torque off the line introduces you instantly. Its acceleration brings a fun, new kick to your everyday to-do list. And the LEAF’s low center of gravity means curve-hugging and easy control in the driver’s seat.

THE PERKS YOU DESERVE

Power up your LEAF® and you’re greeted with high-tech features you’d expect from a vehicle this innovative, like the available Bose® sound system. Standard heated front seats keep you cozy, while available black leather-appointed seats are a sleek touch to top it off.

- Room for 5
- Heated front and rear seats³
- Bose® sound system



NISSANCONNECTSM EV

Drive more. Do more. The available NissanConnectSM EV and Zero Emissions menus help you manage your driving range, calculate range-saving routes and find the nearest spot to charge.^{1,2}

Zero Emissions Menu | NissanConnectSM EV¹



THE FUTURE LOOKS LIKE THIS

¹NissanConnectSM EV requires compatible GSM/GPRS cellular network provided by independent cellular companies not within Nissan’s control. Cellular network not available in all areas and/or available at all times. In areas with network coverage, signal strength may vary and/or not be available at all times. Technology is evolving, and changes to cellular networks or other third party changes may affect future NissanConnectSM EV functionality. Should a third party provider terminate/further restrict network service, NissanConnectSM EV service may be suspended or terminated without notice or liability to Nissan and/or its agents or affiliates. Like other devices that rely on network coverage, once the network is terminated, NissanConnectSM EV will not function unless equipment replacements, upgrades, or alternative network coverage are available at that time, which Nissan cannot guarantee. Nissan is not responsible for associated costs that may be required for

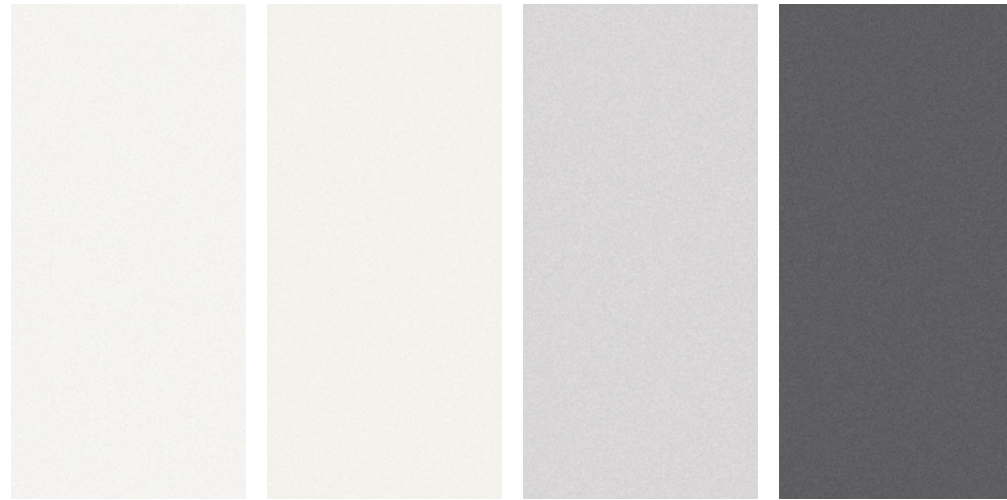
continued NissanConnectSM EV operation due to cellular network termination (including equipment upgrades, if available, or roaming charges on alternative networks) or other third party changes. Certain remote functions require compatible smartphone, not included with vehicle. NissanConnectSM EV subscription service requires owner consent to activate. Text rates and/or data usage may apply to NissanConnectSM EV communications received by email or SMS/text message. Terms and conditions of Subscription Agreement apply. ²Quick Charge charging networks are third party owned, not within Nissan’s control. Availability of charging stations not guaranteed. Charge times may vary depending on temperature, age of battery, quick charger used, and other conditions. ³Rear heated seats available on SL trim only. Bose® is a registered trademark of The Bose Corporation. EZ-ChargeSM is a service mark of NRG EV Services LLC.



LEAF EZ-CHARGESM APP

Stay up to date. The LEAF EZ-Charge app gives you access to the most accurate and complete public charging station maps available. You can filter results by charging network and charger type. Need a fast boost? Pinpoint the closest DC Quick chargers, delivering an 80% charge in 30 minutes or less, at your fingertips.²

CHOOSE YOUR COLOR



Glacier White QAK

S24/S30 SV SL

Pearl White¹ QAB

S24/S30 SV SL

Brilliant Silver K23

S24/S30 SV SL

Gun Metallic KAD

S24/S30 SV SL

BLACK CLOTH

BIO SUEDE PET BLACK CLOTH²

BIO SUEDE PET LIGHT GRAY CLOTH²

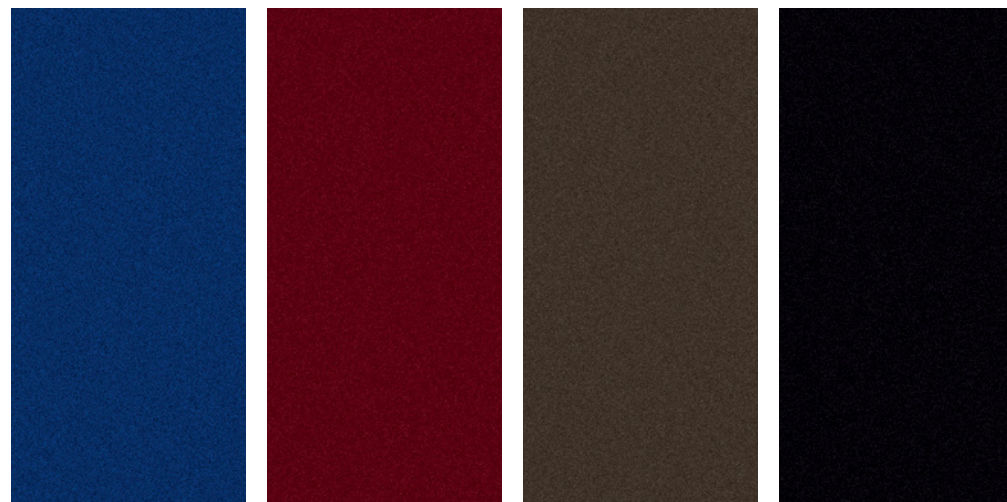
BLACK LEATHER

<input type="checkbox"/>	<input type="checkbox"/>	<input type="checkbox"/>
<input type="checkbox"/>	<input type="checkbox"/>	<input type="checkbox"/>
<input type="checkbox"/>	<input type="checkbox"/>	<input type="checkbox"/>
<input type="checkbox"/>	<input type="checkbox"/>	<input type="checkbox"/>

<input type="checkbox"/>	<input type="checkbox"/>	<input type="checkbox"/>
<input type="checkbox"/>	<input type="checkbox"/>	<input type="checkbox"/>
<input type="checkbox"/>	<input type="checkbox"/>	<input type="checkbox"/>
<input type="checkbox"/>	<input type="checkbox"/>	<input type="checkbox"/>

<input type="checkbox"/>	<input type="checkbox"/>	<input type="checkbox"/>
<input type="checkbox"/>	<input type="checkbox"/>	<input type="checkbox"/>
<input type="checkbox"/>	<input type="checkbox"/>	<input type="checkbox"/>
<input type="checkbox"/>	<input type="checkbox"/>	<input type="checkbox"/>

<input type="checkbox"/>	<input type="checkbox"/>	<input type="checkbox"/>
<input type="checkbox"/>	<input type="checkbox"/>	<input type="checkbox"/>
<input type="checkbox"/>	<input type="checkbox"/>	<input type="checkbox"/>
<input type="checkbox"/>	<input type="checkbox"/>	<input type="checkbox"/>



Deep Blue Pearl RAY

S24/S30 SV SL

Coulis Red NAW

S24/S30 SV SL

Forged Bronze CAT

S24/S30 SV SL

Super Black KH3

S24/S30 SV SL

BLACK CLOTH

BIO SUEDE PET BLACK CLOTH²

BIO SUEDE PET LIGHT GRAY CLOTH²

BLACK LEATHER

<input type="checkbox"/>	<input type="checkbox"/>	<input type="checkbox"/>
<input type="checkbox"/>	<input type="checkbox"/>	<input type="checkbox"/>
<input type="checkbox"/>	<input type="checkbox"/>	<input type="checkbox"/>
<input type="checkbox"/>	<input type="checkbox"/>	<input type="checkbox"/>

<input type="checkbox"/>	<input type="checkbox"/>	<input type="checkbox"/>
<input type="checkbox"/>	<input type="checkbox"/>	<input type="checkbox"/>
<input type="checkbox"/>	<input type="checkbox"/>	<input type="checkbox"/>
<input type="checkbox"/>	<input type="checkbox"/>	<input type="checkbox"/>

<input type="checkbox"/>	<input type="checkbox"/>	<input type="checkbox"/>
<input type="checkbox"/>	<input type="checkbox"/>	<input type="checkbox"/>
<input type="checkbox"/>	<input type="checkbox"/>	<input type="checkbox"/>
<input type="checkbox"/>	<input type="checkbox"/>	<input type="checkbox"/>

<input type="checkbox"/>	<input type="checkbox"/>	<input type="checkbox"/>
<input type="checkbox"/>	<input type="checkbox"/>	<input type="checkbox"/>
<input type="checkbox"/>	<input type="checkbox"/>	<input type="checkbox"/>
<input type="checkbox"/>	<input type="checkbox"/>	<input type="checkbox"/>

■ Standard

¹Extra cost option.

²Cloth contains Polyethylene terephthalate (PET), a recycled material.

Nissan has taken care to ensure that the color swatches presented here are the closest possible representations of actual vehicle colors. Swatches may vary slightly due to the printing process and whether viewed in daylight, fluorescent or incandescent light. Please see the actual colors at your local Nissan dealer.

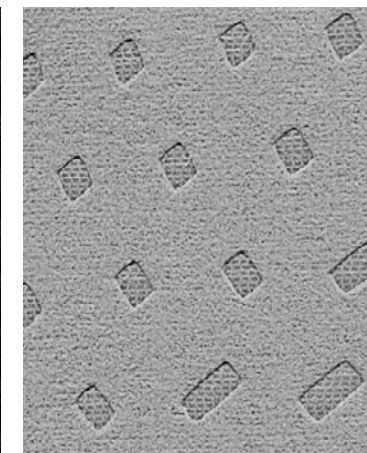
CHOOSE YOUR INTERIOR



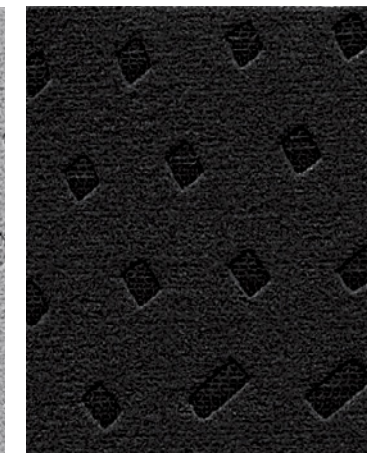
Nissan LEAF[®] SL shown in Black Leather.



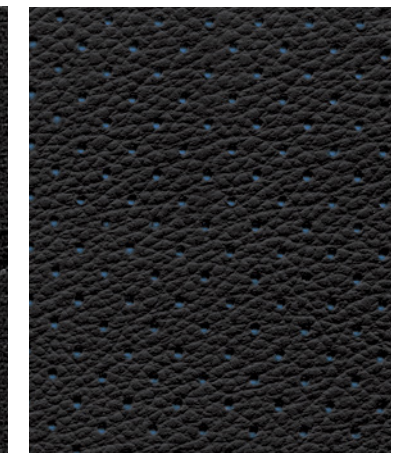
Black Cloth
S24/S30



Bio Suede PET Light Gray Cloth²
SV



Bio Suede PET Black Cloth²
SV



Black Leather
SL

CHOOSE YOUR TRIM LEVEL

S24

- 80 kW AC synchronous electric motor
- 24 kWh Li-ion battery (84-mile range)
- Zero Emissions Vehicle (ZEV)
- 16" Steel wheels with wheel covers
- B-mode (regenerative braking drive mode)
- Vehicle Dynamic Control (VDC)¹ with Traction Control System (TCS)
- Portable opportunity-charge cable
- RearView Monitor²
- Nissan Intelligent Key[®] with Push Button Start
- Heated front seats
- Automatic Temperature Control (ATC)
- 60/40 Split fold-down rear seats
- Bluetooth[®] Hands-free Phone System³
- Hands-free text messaging assistant⁴
- AM/FM/CD audio system with four speakers
- NissanConnectSM with Mobile Apps and 5.0" color display⁵
- USB connection for compatible devices⁶
- Six standard air bags⁷
- Tire Pressure Monitoring System (TPMS) with Easy-Fill Tire Alert^{8,9}

KEY AVAILABLE PACKAGE: Charge Package



S30

INCLUDES S24 EQUIPMENT PLUS:

- 30 kWh Li-ion battery (107-mile range)¹⁰

107
MILE RANGE¹⁰

KEY AVAILABLE PACKAGE: Charge Package



SV

INCLUDES S30 EQUIPMENT PLUS:

- 6.6 kW onboard charger¹¹
- Quick charge port
- NissanConnectSM with Navigation and Mobile Apps with 7.0" touch-screen monitor⁵
- Six speakers
- Voice Destination Entry
- NissanConnectSM EV: allowing for remote connection to vehicle¹²
- NavTraffic[®] and NavWeather[®] provided by SiriusXM^{®13}
- 17.0" Aluminum-alloy wheels
- Hybrid heater system
- Auto-dimming rearview mirror
- Heated leather-wrapped steering wheel
- Heated outside mirrors
- Bio suede PET cloth seats¹⁴
- Passenger seatback map pocket

KEY AVAILABLE PACKAGE: Premium Package



CHOOSE YOUR PACKAGE

SL

INCLUDES SV EQUIPMENT PLUS:

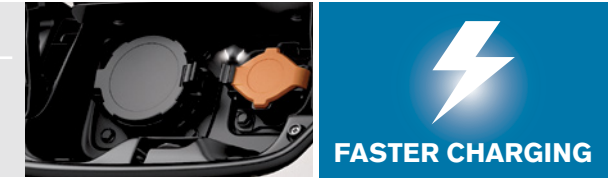
- Leather-appointed seats
- Aerodynamic LED low-beam headlights
- Automatic on/off headlights
- Fog lights
- HomeLink[®] Universal Transceiver
- Photovoltaic solar-panel rear spoiler
- Cargo cover
- Heated rear seats

KEY AVAILABLE PACKAGE: Premium Package



Charge Package (S24, S30)

- 6.6 kW onboard charger¹¹
- Quick charge port



Premium Package (SV, SL)

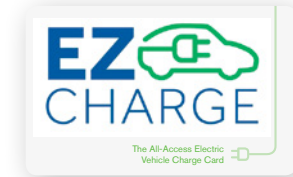
- Around View[®] Monitor²
- Bose[®] audio system with AM/FM/CD and seven speakers



FAST. EASY. CHARGING.

With the EZ-ChargeSM card and LEAF[®] EZ-ChargeSM app, it's never been easier to charge up on the go.

EZ-ChargeSM lets you carry a single access card for charging your Nissan LEAF on multiple networks across America, while the LEAF EZ-ChargeSM app helps you out with charging station maps, the closest DC Quick charger, a Route Planner, and more.¹⁵ Available in the iTunes[®] and Android[®] app stores. <http://EZ-Charge.com>



GET THE CARD



GET THE APP

¹VDC, which should remain on when driving except when freeing the vehicle from mud or snow, cannot prevent accidents due to abrupt steering, carelessness, or dangerous driving techniques. ²Parking aid/convenience feature. Cannot completely eliminate blind spots. May not detect every object and does not warn of moving objects. Always check surroundings and turn to look behind you before moving vehicle. ³Availability of specific features is dependent upon the phone's Bluetooth[®] support. Please refer to your phone Owner's Manual for details. Bluetooth[®] word mark and logos are owned by Bluetooth SIG, Inc., and any use of such marks by Nissan is under license. See NissanUSA.com/bluetooth for details. ⁴Use the text messaging feature after stopping your vehicle in a safe location. If you have to use the feature while driving, exercise extreme caution at all times so full attention may be given to vehicle operation. Compatible smartphone required. Text rates and/or data usage may apply. ⁵Driving is serious business. Only use features when safe to do so. App availability is dependent upon vehicle model, trim level, packaging, and/or options. See NissanUSA.com/connect for complete app availability details. Never program while driving. GPS mapping may not be detailed in all areas or

reflect current road status. Compatible smartphone required. Cellular network and GPS signals not available in all areas and/or at all times. Technology is evolving, and changes by independent companies are not within Nissan's control. Nissan is not responsible for associated costs that may be required for continued operation due to cellular network termination (including equipment upgrades, if available, or roaming charges on alternative networks) or other third party changes. Should a third party provider terminate/restrict service, service may be terminated without notice and with no liability to Nissan and its agents or affiliates. Subscription Agreement required and terms and conditions of Subscription Agreement apply. See NissanUSA.com/connect for details. Text rates and/or data usage may apply. ⁶Driving is serious business and requires your full attention. If you have to use the connected device while driving, exercise extreme caution at all times so full attention may be given to vehicle operation. External device not included. ⁷Air bags are only a supplemental restraint system; always wear your seat belt. Even with the occupant-classification sensor, rear-facing child restraints should not be placed in the front-passenger's seat. All children 12 and under should ride in the rear seat properly secured in child restraints, booster seats, or seat belts according to their size. Air bags will only inflate in certain accidents; see your Owner's Manual for more details. ⁸TPMS is not a substitute for regular tire pressure checks. ⁹Vehicle must be on for the Easy-Fill Tire Alert to operate. ¹⁰2016 Nissan LEAF[®] S30, SV, and SL trim EPA range is 107 miles. Actual mileage may vary with driving conditions — use for comparison only. ¹¹Faster estimated charge time based with 240-volt charging dock and 6.6 kW onboard charger, which is standard on all trims except S24/S30. Charge times may vary. ¹²NissanConnectSM EV requires compatible GSM/GPRS cellular network provided by independent cellular companies not within Nissan's control. Cellular network not available in all areas and/or available at all times. In areas with network coverage, signal strength may vary and/or not be available at all times. Technology is evolving, and changes to cellular networks or other third party changes may affect future NissanConnectSM EV functionality. Should a third party provider terminate/further restrict network service, NissanConnectSM EV service may be suspended or terminated without notice or liability to Nissan and/or its agents or affiliates. Like other devices that rely on network coverage, once the network is terminated, NissanConnectSM EV will not function unless equipment replacements, upgrades, or alternative network coverage are available at that time, which Nissan cannot guarantee. Nissan is not responsible for associated costs that may be required for continued NissanConnectSM EV operation due to cellular network termination (including equipment upgrades, if available, or roaming charges on alternative networks) or other third party changes. Certain remote functions require compatible smartphone, not included with vehicle. NissanConnectSM EV subscription service requires owner consent to activate. Text rates and/or data usage may apply to NissanConnectSM EV communications received by email or SMS/text message. Terms and conditions of Subscription Agreement apply. ¹³Required monthly subscriptions sold separately for each available SiriusXM feature after trial period, and are continuous until you call SiriusXM to cancel. Installation costs, one-time activation fee, other fees and taxes will apply. Each SiriusXM feature availability is dependent upon vehicle model, trim level, packaging, and/or options, and may only be available in select markets. Satellite Radio U.S. service, NavWeather[®] service, and SiriusXM Travel Link[®] services (if any of the foregoing features are equipped on vehicle) available only to those 18 or older in the 48 contiguous states and D.C. Fees and programming subject to change. Subscriptions governed by Customer Agreement available at siriusxm.com. ©2016 Sirius XM Radio Inc. Sirius, XM[®] and all related marks and logos are trademarks of Sirius XM Radio Inc. ¹⁴Cloth contains Polyethylene terephthalate (PET), a recycled material. ¹⁵Public charging networks are third party owned, not within Nissan's control. Availability/accessibility of charging stations is not guaranteed. Android[®] and Google[®] are registered trademarks of Google Inc. Bose[®] is a registered trademark of The Bose Corporation. EZ-ChargeSM is a service mark of NRG EV Services LLC. HomeLink[®] is a registered trademark of Gentex Corporation. iPhone[®] and iTunes[®] are registered trademarks of Apple, Inc. All rights reserved. iPhone[®] or other external device not included.

CHOOSE YOUR ACCESSORIES



IT'S UNIQUE, NOW MAKE IT YOURS

Every Genuine Nissan Accessory is custom-fit, custom-designed and durability-tested. Each one is also backed by Nissan's 3-year/36,000-mile (whichever occurs first) limited warranty (if installed by dealer at the time of purchase).¹ Plus, they can be financed when installed by the dealer at the time of purchase.

A. Holographic Kick Plates (2-piece set)

For a grand entry every time.

B. Rear Cargo Cover²

No one outside needs to know what's in there.

C. Sorona[®] Carpeted Floor Mats³

Made of renewably sourced fiber, ready to protect your carpeting.

D. All-season Molded Floor Protectors

Neither sleet, snow, nor mud shall mess up your ride.

E. Clear Charging Port Protector

Keep your port in top condition, even with everyday charging.

F. Rear Bumper Protector

Scratches? What scratches?

G. Carpeted Cargo Mat²

The plush way to protect.

H. Cargo Organizer²

Indulge your inner neat freak.

Additional Accessories:

- Splash Guards
- Cargo Net
- Recycling and Shopping Bags
- Nose Mask
- Vehicle Cover
- And More

¹Genuine Nissan Accessories are covered by Nissan's Limited Warranty on Genuine Nissan Replacement Parts, Genuine NISMO[®] S-Tune Parts, and Genuine Nissan Accessories for the longer of 12 months/12,000 miles (whichever occurs first) or the remaining period under the 3-year/36,000-mile (whichever occurs first) Nissan New Vehicle Limited Warranty. Terms and conditions apply. See Warranty Information Booklet for details. ²Cargo shown for display purposes only. Cargo and load capacity limited by weight and distribution. Always secure all cargo. ³Post-consumer recycled material will exceed 30%. Sorona[®] is a registered trademark of E. I. du Pont de Nemours and Company.

GENUINE NISSAN ACCESSORIES

For more information and to shop online for LEAF[®] Genuine Nissan Accessories, go to bit.ly/16leaf-estore



Nissan LEAF[®] SL shown with Nose Mask, Zero Emission Body Design Graphics, and Splash Guards.

SPECIFICATIONS

Electric Motor	S24	S30	SV	SL
80 kW AC synchronous electric motor	■	■	■	■
24 kWh lithium-ion (Li-ion) battery (84-mile range)	■	■	■	■
30 kWh lithium-ion (Li-ion) battery (107-mile range)	■	■	■	■
3.6 kW onboard charger	■	■	■	■
6.6 kW onboard charger	□	□	■	■
Emissions – Zero Emissions Vehicle (ZEV)	■	■	■	■
Portable opportunity-charge cable (110–120 V)	■	■	■	■
Normal charge port	■	■	■	■
Quick charge port	□	□	■	■

Drivetrain	S24	S30	SV	SL
Single-speed reduction gear	■	■	■	■
Palm-shift drive selector	■	■	■	■
Hill start assist	■	■	■	■

Brakes	S24	S30	SV	SL
Front and rear vented disc brakes	■	■	■	■
Regenerative braking system	■	■	■	■
B-mode (enhanced regenerative braking drive mode)	■	■	■	■
4-wheel Anti-lock Braking System (ABS)	■	■	■	■
Electronic Brake force Distribution (EBD)	■	■	■	■
Brake Assist	■	■	■	■

Suspension/Chassis Bracing/Steering	S24	S30	SV	SL
Independent strut front suspension with coil springs	■	■	■	■
Torsion bar axle rear suspension with coil springs	■	■	■	■
Front and rear stabilizer bars	■	■	■	■
Vehicle-speed-sensitive electric power steering	■	■	■	■

Wheels/Tires	S24	S30	SV	SL
16" Steel wheels	■	■	■	■
17" 5-spoke aluminum-alloy wheels	■	■	■	■
Tire repair kit	■	■	■	■

Exterior Features	S24	S30	SV	SL
Aerodynamic LED low-beam headlights	■	■	■	■
Aerodynamic halogen headlights	■	■	■	■
Automatic on/off headlights	■	■	■	■
Fog lights	■	■	■	■
Photovoltaic solar-panel rear spoiler	■	■	■	■
Rear spoiler	■	■	■	■
Aerodynamic underbody cover and rear diffuser	■	■	■	■
Dual power body-color heated outside mirrors	■	■	■	■
Charge port with light and lock	■	■	■	■
One-touch rear hatch release	■	■	■	■

Comfort/Convenience	S24	S30	SV	SL
Nissan Navigation System with 7.0" multi-touch control color monitor ¹	■	■	■	■
SiriusXM [®] Travel Link ^{®2}	■	■	■	■
NissanConnect SM with Navigation and Mobile App ³	■	■	■	■
Hands-free text messaging assistant ⁴	■	■	■	■
Voice Destination Entry	■	■	■	■
RearView Monitor	■	■	■	■
Around View [®] Monitor	■	■	□	□
Nissan Intelligent Key [®] with Push Button Start	■	■	■	■
Bluetooth [®] Hands-free Phone System ⁵	■	■	■	■
HomeLink [®] Universal Transceiver	■	■	■	■
NissanConnect SM EV allowing for remote connection to vehicle: ⁶	■	■	■	■
Monitor battery state of charge/charging status	■	■	■	■
Start vehicle charging	■	■	■	■
Activate heating and air conditioning systems	■	■	■	■
Automatic Temperature Control (ATC)	■	■	■	■
Trip computer	■	■	■	■
Power door locks with auto-locking feature	■	■	■	■
Power windows with driver's one-touch auto-up/down feature	■	■	■	■
Auto-dimming rearview mirror	■	■	■	■
Tilt steering column	■	■	■	■
Cruise control with steering wheel-mounted controls	■	■	■	■
Rear intermittent wiper with washer	■	■	■	■
Center console storage	■	■	■	■
Rear window defroster	■	■	■	■
Passenger's seatback pocket	■	■	■	■
Front center armrest with storage	■	■	■	■
Remote charge door release	■	■	■	■
Cargo cover	■	■	■	■
Auxiliary 12-volt DC power outlet	■	■	■	■
Heated front seats	■	■	■	■
Heated rear seats	■	■	■	■

Seating/Appointments	S24	S30	SV	SL
6-way manual adjustable driver's seat	■	■	■	■
4-way manual adjustable front passenger's seat	■	■	■	■
Cloth seat trim	■	■	■	■
Bio suede PET cloth seat trim ⁷	■	■	■	■
Leather-appointed seats	■	■	■	■
Heated leather-wrapped steering wheel	■	■	■	■
60/40 Split fold-down rear seats	■	■	■	■

■ Standard □ Part of Charge Package (S24/S30)

□ Part of Premium Package (SV, SL)

¹Never program while driving. GPS mapping may not be detailed in all areas or reflect current road status. ²Required monthly subscriptions sold separately for each available SiriusXM feature after trial period, and are continuous until you call SiriusXM to cancel. Installation costs, one-time activation fee, other fees and taxes will apply. Each SiriusXM feature availability is dependent upon vehicle model, trim level, packaging, and/or options, and may only be available in select markets. Satellite Radio U.S. service, NavWeather[®] service, and SiriusXM Travel Link[®] services (if any of the foregoing features are equipped on vehicle) available only to those 18 or older in the 48 contiguous states and D.C. Fees and programming subject to change. Subscriptions governed by Customer Agreement available at siriusxm.com. ©2016 Sirius XM Radio Inc. Sirius, XM[®] and all related marks and logos are trademarks of Sirius XM Radio Inc. ³Driving is serious business. Only use features when safe to do so. App availability is dependent upon vehicle model, trim level, packaging, and/or options. See NissanUSA.com/connect for complete app availability details. Never program while driving. GPS mapping may not be detailed in all areas or reflect current road status. Cellular network and GPS signals not available in all areas and/or at all times. Technology is evolving, and changes by independent companies are not within Nissan's control. Nissan is not responsible for associated costs that may be required for continued operation due to cellular network termination (including equipment upgrades, if available, or roaming charges on alternative networks) or other third party changes. Should a third party provider terminate/restrict service, service may be terminated without notice and with no liability to Nissan and its agents or affiliates. Subscription Agreement required and terms and conditions of Subscription Agreement apply. See NissanUSA.com/connect for details. Text rates and/or data usage may apply. ⁴Use the text messaging feature after stopping your vehicle in a safe location. If you have to use the feature while driving, exercise extreme caution at all times so full attention may be given to vehicle operation. Compatible smartphone required. Text rates and/or data usage may apply. ⁵Availability of specific features is dependent upon the phone's Bluetooth[®] support. Please refer to your phone Owner's Manual for details. Bluetooth[®] word mark and logos are owned by Bluetooth SIG, Inc., and any use of such marks by Nissan is under license. See NissanUSA.com/bluetooth for details. ⁶NissanConnectSM EV requires compatible GSM/GPRS cellular network provided by independent cellular companies not within Nissan's control. Cellular network not available in all areas and/or available at all times. In areas with network coverage, signal strength may vary and/or not be available at all times. Technology is evolving, and changes to cellular networks or other third party changes may affect future NissanConnectSM EV functionality. Should a third party provider terminate/further restrict network service, NissanConnectSM EV service may be suspended or terminated without notice or liability to Nissan and/or its agents or affiliates. Like other devices that rely on network coverage, once the network is

Audio/Entertainment	S24	S30	SV	SL
AM/FM/CD audio system with 5.0" QVGA color monitor	■	■	■	■
AM/FM/CD audio system with 7.0" QVGA color monitor	■	■	■	■
Bose [®] audio system with AM/FM/CD MP3/WMA CD playback capability	■	■	□	□
Four speakers	■	■	■	■
Six speakers	■	■	■	■
Seven speakers	■	■	□	□
SiriusXM [®] Satellite Radio with 3-month trial subscription ²	■	■	■	■
Auxiliary audio input jack ³	■	■	■	■
USB connection port for compatible devices ⁴	■	■	■	■

Safety/Security	S24	S30	SV	SL
Nissan Advanced Air Bag System (AABS) with dual-stage supplemental front air bags with seat belt and occupant-classification sensors ⁹	■	■	■	■
Driver and front-passenger seat-mounted side-impact supplemental air bags ⁹	■	■	■	■
Roof-mounted curtain side-impact supplemental air bags for front and rear-seat outboard occupant head protection ⁹	■	■	■	■
Vehicle Dynamic Control (VDC)	■	■	■	■
Traction Control System (TCS)	■	■	■	■
3-point seat belts for all seating positions	■	■	■	■
ALR/ELR seat belt system for all passenger seating positions (ELR for driver's seat)	■	■	■	■
Front seat belts with pretensioners and load limiters	■	■	■	■
Front-seat height-adjustable head restraints	■	■	■	■
Rear-seat height-adjustable headrests	■	■	■	■
LATCH System (Lower Anchors and Tethers for Children)	■	■	■	■
Child-safety rear door locks	■	■	■	■
Zone Body construction with front and rear crumple zones	■	■	■	■
Energy-absorbing steering column	■	■	■	■
Pipe-style steel side-door guard beams	■	■	■	■
Tire Pressure Monitoring System (TPMS) with Easy-Fill Tire Alert	■	■	■	■
Nissan Vehicle Immobilizer System	■	■	■	■
Vehicle Security System	■	■	■	■

terminated, NissanConnectSM EV will not function unless equipment replacements, upgrades, or alternative network coverage are available at that time, which Nissan cannot guarantee. Nissan is not responsible for associated costs that may be required for continued NissanConnectSM EV operation due to cellular network termination (including equipment upgrades, if available, or roaming charges on alternative networks) or other third party changes. Certain remote functions require compatible smartphone, not included with vehicle. NissanConnectSM EV subscription service requires owner consent to activate. Text rates and/or data usage may apply to NissanConnectSM EV communications received by email or SMS/text message. Terms and conditions of Subscription Agreement apply. ⁷Cloth contains Polyethylene terephthalate (PET), a recycled material. ⁸External device not included. ⁹Air bags are only a supplemental restraint system; always wear your seat belt. Even with the occupant-classification sensor, rear-facing child restraints should not be placed in the front-passenger's seat. All children 12 and under should ride in the rear seat properly secured in child restraints, booster seats, or seat belts according to their size. Air bags will only inflate in certain accidents; see your Owner's Manual for more details. Bose[®] is a registered trademark of The Bose Corporation. HomeLink[®] is a registered trademark of Gentex Corporation. This brochure is intended for general descriptive and informational purposes only. It is subject to change and does not constitute an offer, representation or warranty (express or implied) by Nissan North America, Inc. Interested parties should confirm the accuracy of any information in this brochure as it relates to a vehicle directly with Nissan North America, Inc., before relying on it to make a purchase decision. Nissan North America, Inc., reserves the right to make changes, at any time, without prior notice, in prices, colors, materials, equipment, specifications, and models and to discontinue models or equipment. Due to continuous product development and other pre- and post-production factors, actual vehicle, materials and specifications may vary from this brochure. Some vehicles shown with optional equipment. See the actual vehicle for complete accuracy. Availability and delivery times for particular models or equipment may vary. Specifications, options and accessories may differ in Hawaii, U.S. territories and other countries. For additional information on availability, options or accessories, see your Nissan dealer or contact Nissan North America, Inc. At NissanUSA.com, you'll find virtual product demonstrations, a way to "build your own Nissan," a dealer locator, and more information about key Nissan support services. Or if you'd prefer, call **1-800-NISSAN-3** for answers to specific questions about LEAF[®] or any other Nissan vehicle. The Nissan names, logos, product names, feature names, and slogans are trademarks owned by or licensed to Nissan Motor Co. Ltd. and/or its North American subsidiaries. Other trademarks and trade names are those of their respective owners. **Always wear your seat belt, and please don't drink and drive.** ©2016 Nissan North America, Inc. 1617501N-10/15-50M-CGI

PACKAGES

□ Charge Package (S24/S30)
6.6 kW onboard charger (6 kW output)
Quick charge port

□ Premium Package (SV, SL)
Around View [®] Monitor
Bose [®] audio system with AM/FM/CD and seven speakers

DIMENSIONS/CAPACITIES/WEIGHTS/MPGe

Dimensions – Inches	
Exterior	
Wheelbase	106.3
Overall length	175.0
Overall width	69.7
Overall height	61.0
Track width (front/rear)	60.6/60.4

Aerodynamics – Cd	
Drag coefficient	0.28

Interior (front/rear)			
Head room	41.2/37.3	Hip room	51.7/50.0
Leg room	42.1/33.3	Shoulder room	54.3/52.5

Capacities	
Seating capacity	5
EPA interior passenger volume (cu. ft.)	92.4
Total interior volume (cu. ft.)	116.0
Cargo volume with rear seat up (cu. ft.)	23.6
Cargo volume with rear seat down (cu. ft.)	30.0

Curb Weights – Lbs.				
	S24	S30	SV	SL
Base total	3,256	3,307	3,342	3,391

2016 EPA Fuel Economy Estimates – MPGe				
City/Hwy/Combined	S24	S30	SV	SL
Electric motor	126/101/114	124/101/112	124/101/112	124/101/112
Actual mileage may vary with driving conditions – use for comparison only.				